



QUICK REFERENCE GUIDE

omni brake			ultra life+			Description	B Dimension	Caged
OmniBrake	VCT OmniBrake	REX OmniBrake	UltraLife Plus	VCT UltraLife Plus	REX UltraLife Plus			
TSE Generic Will-Fit Units								
2024TN2-C						T-2024 2.5" stroke + clevis	7.75"	N
2424TN2-C						T-2424 2.5" stroke + clevis	7.75"	N
2430TN2-C						T-2430 2.5" stroke + clevis	7.85"	N
						T-2430 3.0" stroke + clevis	7.25"	N
3030TN2		3030TVR2 + K575	3030TN2ULP-C		3030TVR2ULP + K575	T-3030 2.5" stroke	7.85"	N
3030TN2-C		3030TVR2 + K575	3030TN2ULP-C		3030TVR2ULP + K575	T-3030 2.5" stroke + clevis	7.85"	N
3030TN3		3030TVR3 + K575			3030TVR3ULP + K575	T-3030 3.0" stroke	7.35"	N
3030TN3-C		3030TVR3 + K575	3030TN3ULP-C		3030TVR3ULP + K575	T-3030 3.0" stroke + clevis	7.35"	N
						T-3036 2.5" stroke + clevis	7.80"	N
						T-3036 3.0" stroke + clevis	7.30"	N
						T-3636 3.0" stroke + clevis	7.25"	N
				3036TVW3ULP-80114		T-3036 3" stroke welded clevis 2.25" A" dim.	2.25"	N
Piggyback Kits								
	3030SV2K			3030SV2ULPK		VCT T-3030 2.5" stroke single Kit + Box	-	Y
	3030SV3K			3030SV3ULPK		VCT T-3030 3.0" stroke single Kit + Box	-	Y
3030 Direct Fit Units (Clamped + Threaded Rod)								
3030TN3-2390			3030TN3ULP-80053			T-3030 3.0" stroke + clevis	5.75"	Y
3030TN2-HNTRX-C	3030TV2-HNTRX	3030TVR2 + K975	3030TN2ULP-HNTRX-C	3030TV2ULP-HNTRX	3030TVR2ULP + K975	T-3030 2.5" stroke + long rod + clevis	9.75"	N
3030TN3-HNTRX-C	3030TV3-HNTRX	3030TVR3 + K975	3030TN3ULP-HNTRX-C	3030TV3ULP-HNTRX	3030TVR3ULP + K975	T-3030 3.0" stroke + long rod + clevis	9.75"	N
3030 Direct Fit Units (Tamper Proof + Pre Cut Threaded Rod)								
3030TL2-2401			3030TL2ULP-80027			T-3030 2.5" stroke	5.75"	Y
3030TL3-3265			3030TL3ULP-80015			T-3030 3.0" stroke	5.75"	Y
3030TL2-2412						T-3030 2.5" stroke + long rod	9.75"	Y
3030TL3-2517						T-3030 3.0" stroke + long rod	9.75"	Y
3030 Direct Fit Units (Tamper Proof + Welded Clevis)								
			3030TLW2ULP-80045			T-3030 2.5" stroke + welded clevis	6.80"	Y
3030TLW3-4020			3030TLW3ULP-80036			T-3030 3" stroke + welded clevis	6.80"	Y
3030 With Clevis For Truck & Trailer Application								
			3030TL2ULP-80026			T-3030 2.5" stroke + clevis	5.75"	Y
			3030TL3ULP-80011			T-3030 3.0" stroke + clevis	5.75"	Y
3030 With Welded Clevis For Truck & Trailer Application								
3030TNW2-2998	replaced by 3030TVW3-4200	3030TVR2 + K225-130		replaced by 3030TVW3ULP-80085	3030TVR2ULP + K225-130	T-3030 2.5" stroke + welded clevis	2.25"	Y
		3030TVR3 + K225-130	3030TNW3ULP-80060		3030TVR3ULP + K225-130	T-3030 3.0" stroke + welded clevis	2.25"	Y
3030TNW2-3612	replaced by	3030TVR2 + K287-130		replaced by	3030TVR2ULP + K287-130	T-3030 2.5" stroke + welded clevis	2.87"	Y
	replaced by	3030TVR3 + K287-130		replaced by	3030TVR3ULP + K287-130	T-3030 3.0" stroke + welded clevis	2.87"	Y
	replaced by	3030TVR2 + K680-130		replaced by	3030TVR2ULP + K680-130	T-3030 2.5" stroke + welded clevis	6.80"	Y
	replaced by	3030TVR3 + K680-130		replaced by	3030TVR3ULP + K680-130	T-3030 3.0" stroke + welded clevis	6.80"	Y
	replaced by	3030TVR2 + K110-130		replaced by	3030TVR2ULP + K110-130	T-3030 2.5" stroke + welded clevis	11.00"	Y
3030TNW3-3616	replaced by	3030TVR3 + K110-130		replaced by	3030TVR3ULP + K110-130	T-3030 3.0" stroke + welded clevis	11.00"	Y
Remote Chambers								
30RPC2						T-30 Remote 2.5" stroke	6.57"	N
30RPC3						T-30 Remote 3.0" stroke	6.20"	N
12SCN0-C						T-12 1.75" stroke + clevis	8.55"	N
16SCN1-C						T-16 2.25" stroke + clevis	8.05"	N
20SCN1-C						T-20 2.25" stroke + clevis	8.00"	N
20SCN2-C						T-20 2.5" stroke + clevis	7.75"	N
24SCN2-C						T-24 2.5" stroke + clevis	7.75"	N
24SCN3-C						T-24 3.0" stroke + clevis	7.15"	N
30SCN2-C						T-30 2.5" stroke + clevis	7.75"	N
30SCN2-HNTRX-C						T-30 2.5" stroke + long rod + clevis	9.75"	N
30SCN3						T-30 3.0" stroke + clevis	7.30"	N
36SCN3-C						T-36 3.0" stroke + clevis	7.20"	N
Service Chambers With Welded Clevis								
20SCLW2			20SCLW2ULP			T-20 2.5" stroke + welded clevis	2.25"	N
24SCLW2						T-24 2.5" stroke + welded clevis	2.25"	N
24SCLW3			24SCLW3ULP			T-24 3.0" stroke + welded clevis	2.25"	N
			30SCLW3ULP			T-30 3.0" stroke + welded clevis	2.25"	N
Air Disc Brake - Tandem Units								
1616HTLD2-3627						For 1616 Piston Or 1624 Double Diaphragm	-	Y
1816HTND2-3669			1816HTND2UL-4312			For 1816 Piston Or 1824 Double Diaphragm	-	Y
2016HTND2-3710			2016HTND2UL-4313			For 2016 Piston Or 2024 Double Diaphragm	-	Y
1824HTND2-3628						For 1824 Piston Or 1830 Double Diaphragm	-	Y
2024HTND2-3626						For 2024 Piston Or 2030 Double Diaphragm	-	Y
2424HTND2-3629						For 2424 Piston Or 2430 Double Diaphragm	-	Y
Air Disc Brake - Service Chambers								
18HSCND2-4026						T-18 Disc 2.5" stroke	-	Y
20HSCND2-3630						T-20 Disc 2.5" stroke	-	Y
22HSCND2-3631						T-22 Disc 2.5" stroke	-	Y
24HSCND2-3632						T-24 Disc 2.5" stroke	-	Y

omni brake TSE-REX

- All-steel brake chamber
- Center sealed assembly
- Pre-tempered main spring
- Service Diaphragm Sealed In Piggyback 1 Bolt Clamp & Cannot Leak When Air Inlet Ports Are Closed
- Pre-cut pushrod system

STROKE OPTION: 2.5" AND 3.0"
 WARRANTY: 4 YEARS
 SIZE OPTION: 30-30



omni brake

- All-steel brake chamber
- Center sealed assembly
- Pre-tempered main spring
- Patented Bushing Assembly
- Self-Lubricating Center Seal
- Sealed Service Side (TL) Eliminates Clamp
- Regular Clamp (TN)

STROKE OPTION: 2.5" AND 3.0"
 WARRANTY: 4 YEARS
 SIZE OPTION: 24-24 AND 30-30



ultra life+

- All-steel brake chamber
- Exclusive "No Touch" spring
- Recessed pressure plate
- All in one pressure plate
- Dust cap relief valve
- Urethane coating
- Inverted housing design eliminates coil to coil contact
- Sealed when it counts

STROKE OPTION: 2.5" AND 3.0"
 WARRANTY: 10 YEARS
 SIZE OPTION: 30-30 AND 30-36



Note: Many other part numbers not listed are available for CAM and Air Disc brake applications, please call your TSE Brakes representative for any questions

TSEBRAKES.COM

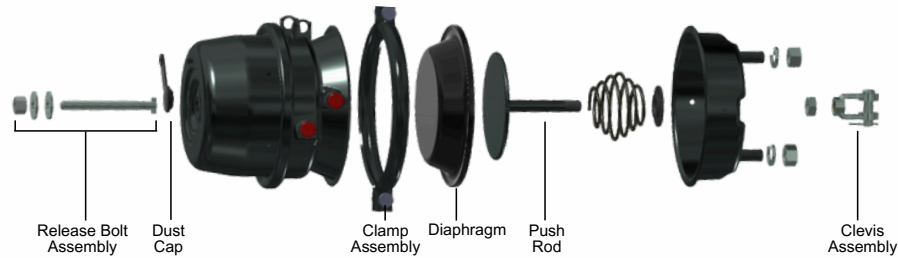
1 (256) 736-6275



QUICK REFERENCE GUIDE

Components

Service Parts	Stroke	Release Bolt Assembly	Dust Cap	Clamp Assembly	Diaphragm	Push Rod	Clevis Assembly
Type 9	1.75"	N/A	N/A	N/A	N/A	N/A	K1103023
Type 12	1.75"	N/A	N/A	N/A	K100120	N/A	K1103023
Type 16	2.25"	N/A	N/A	N/A	K101160	N/A	K1103023
Type 20	2.25"	K1003015-PL	K1173007	N/A	K116200	N/A	K1103023
Type 20 LS	2.5"	K1003015-PL	K1173007	N/A	K116200	N/A	K1103023
Type 24	2.5"	K1003015-PL	K1173007	N/A	K101240	N/A	K1103023
Type 24 LS	3.0"	K1001058-PL	K1173007	K1002413	K113240	N/A	K1103023
Type 30	2.5"	K1003015-PL	K1173007	K1343013-EC	K1003000	K2-1003011-15.15	K1103023
Type 30 LS	3.0"	K1001058-PL	K1173007	K1343013-EC	K113300	K3-1003011-15.65	K1103023
Type 36	3.0"	N/A	K1173007	N/A	N/A	N/A	K1103023



Components

Description	Part Number	Image
Clevis Pin 1/2" Stainless Steel	K1103023-2S	
Clevis Pin 1/4" Stainless Steel	K1153023-3S	
Clevis Pin 1/2"	K1003025	
Clevis Pin 5/8"	K1013025	
Clevis Assembly 5/8" Rod + 5/8" Pin	K2243023-PL	
Clevis Assembly 5/8" Rod + 14mm Pin (Metric)	K2103023	
Clevis Assembly 5/8" Rod + 1/2" SS Pin	K1013023S	
Dust Boot Assembly Heavy Duty	K1011051	
Drain Hole Plugs	K1001130	

Slack Adjusters

Part Number	Hard-ware Kit	Type	Application	Inclination	L1	Bush ID	Spline #	Mounting
TSE07100S	TSE01701K	S-ASA	Drive	L 34	5.5	5/8	28	Stud
TSE07105S	TSE01705K	S-ASA	Truck/Trailer	R 34	6	1/2	28	N/A
TSE07110S	TSE01705K	S-ASA	Truck/Trailer	R 34	6	1/2	10	Stud
TSE07115S	TSE01705K	S-ASA	Truck/Trailer	None	6	1/2	28	N/A
TSE07125S	TSE01705K	S-ASA	Truck/Trailer	None	6	1/2	10	N/A
TSE07130S	TSE01711K	S-ASA	Truck/Trailer	None	6	1/2	28	N/A
TSE07135S	TSE01705K	S-ASA	Truck/Trailer	None	5.5	1/2	28	N/A
TSE07140S	TSE01705K	S-ASA	Truck/Trailer	None	5.5	1/2	10	N/A
TSE07145S	TSE01701K	S-ASA	Drive	L 34	5.5	1/2	10	Stud
TSE07155S	TSE01701K	S-ASA	Truck/Trailer	None	6	5/8	28	Stud
TSE07235S	TSE01709K	S-ASA	Drive	None	5.5	5/8	10	Stud

REX Pushrods

Part Numbers	Description	Typical Applications	Works W/Brands And Models *	Box Color Code
REX Brake Chambers				
3030TVR2	REX T-3030 + Stroke = 2.5" + 4 Year Warranty			
3030TVR3	REX T-3030 + Stroke = 3.0" + 4 Year Warranty			
3030TVR2ULP	REX ULP T-3030 + Stroke = 2.5" + 10 Year Warranty			
3030TVR3ULP	REX ULP T-3030 + Stroke = 3.0" + 10 Year Warranty			
Push Rod Kits - Threaded Includes Jam Nut Installed				
K575	5.75" B dimension threaded Rod	Standard 5" trailer axle	All	Gold
K631	6.31" B dimension threaded Rod	SAF axle	All	Silver
K706	7.06" B dimension threaded Rod	Meritor large diameter axle	All	Purple
K975	9.75" B dimension threaded Rod	Intraax/Vantraax	All	Green
K150	15.0" B dimension threaded Rod	Universal fully threaded	All	None
Push Rod Kits - Fixed Clevis Includes Stainless Steel Pins And Cotters Installed				
K225-130	2.25" A dimension Fixed Clevis with 1.3" pin spacing	Truck welded clevis	1, 3, 4, 6, 8	None
K680-102	6.80" A dimension Fixed Clevis with 1.02 pin spacing	Standard 5" Axle Gunite Slack	1, 2	Orange
K680-130	6.80" A dimension Fixed Clevis with 1.3" pin spacing	Standard 5" Axle	1, 3, 4, 6, 8	Yellow
K680-138	6.80" A dimension Fixed Clevis with 1.38" pin spacing	Standard 5" trailer axle Meritor, Stemco slack	1, 5, 7	White
K110-130	11.0" A dimension Fixed Clevis with 1.3" pin spacing	Intraax/Vantraax	1, 3, 4, 6, 8	Brown
K110-138	11.0" A dimension Fixed Clevis with 1.38" pin spacing	Intraax/Vantraax Meritor, Stemco slack	1, 5, 7	Blue

*Auto Slack Notes

1	TSE/Webb/MEI/Haldex (0.5" Pin)	3	Gunite 2000 Series 1.3" Pin Spacing	5	Meritor 1.38" Pin Spacing (Trailer)	7	Stemco 1.8" Pin Spacing
2	Gunite 1000 Series 1.02" Pin Spacing	4	Meritor 1.3" Pin Spacing (Truck)	6	Stemco 1.3" Pin Spacing	8	Bendix Versajust

indicator™ slack adjuster

- Clearance sensing design
- Easy design installation
- No template require
- Easy to read stroke indicator
- High resistance E-Coat system
- Rubber caps for prevention of water ingress
- Pressure release valve
- Heavy duty pin bushing

SPLINE OPTION WARRANTY SIZE OPTION

10 AND 28 YEARS 7-10 5", 5.5" AND 6"



brake adjuster™

- Clearance sensing design
- Easy design installation
- No template require
- High resistance E-Coat system
- Heavy duty pin bushing
- Pressure release valve prevents over-greasing

SPLINE OPTION WARRANTY SIZE OPTION

10 AND 28 YEARS 7 5", 5.5" AND 6"



Note: Many other part numbers not listed are available for CAM and Air Disc brake applications, please call your TSE Brakes representative for any questions

TSEBRAKES.COM

1 (256) 736-6275